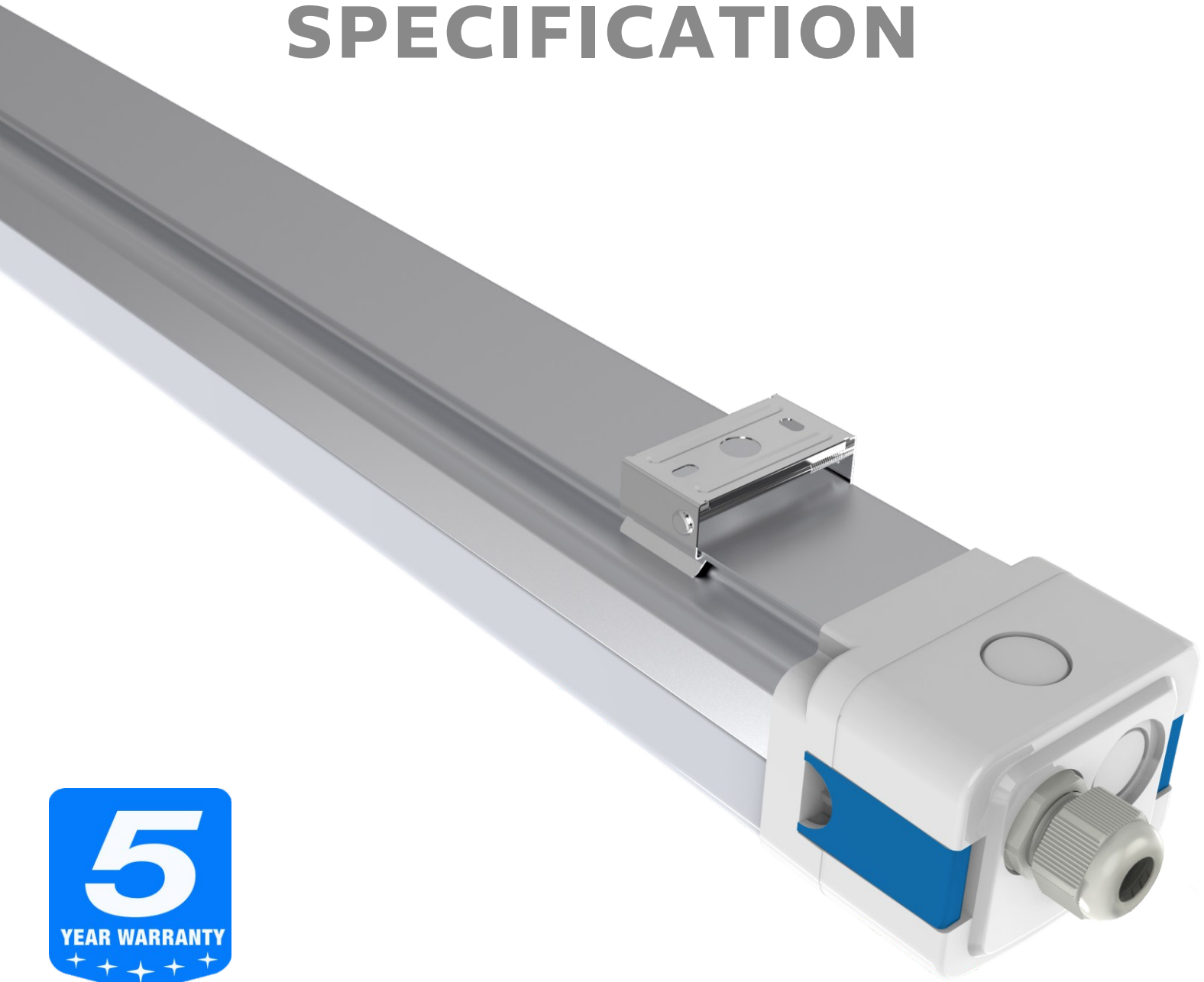


SPECIFICATION



D5 LED TRIPROOF LIGHT

(Eco Choice for Your Projects)

Features



- > High Brightness SAN'AN SMD2835 LEDs, BOKE High PF Flicker-free Driver DIP Switch Power Adjustment Optional;
- > Buckle Design End-cap, Quick & Convenient to Open and Relock for Wiring, Greatly Improve Efficiency And Save Labor Cost;
- > 1/2 Al Housing + 1/2 PC Cover, Excellent Thermal Conductivity;
- > IP65 / IK10 Protection;
- > 120° beam angle;
- > Single or Double Wiring Optional, Linkable Through Single or Double End Wiring;
- > Multiple Installations: Suspension, Wall Mounting;
- > Various intelligent control: 1-10V, DALI, Motion sensor, Daylight sensor, Zigbee and Emergency;
- > No UV or IR and completely mercury free;

Options:

- > Driver: BOKE fixed power driver, DIP switch power adjustable driver;
- > Controls and Dimming: Zigbee wireless control / 1-10V Dimming / Daylight sensor, Microwave sensor, Emergency;
- > Plug: European / Australia plug with 0.75mm²/1.5mm²/2.5mm² 3-pins or 5-pins (dimming) cable;
- > Installation : Suspension, Wall Mounting;
- > Wiring: Single or double wiring;

Application

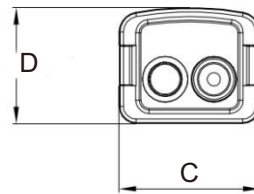
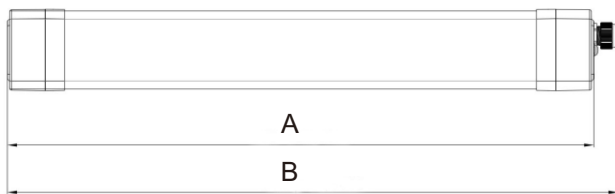
- > Replacement for fluorescent NCF;
- > Workshops and warehouse;
- > Garage and car parks;
- > Sport facility;
- > Corridor/Gallery/Corridor;
- > Outdoor & Indoor Locations;

Technical Parameters

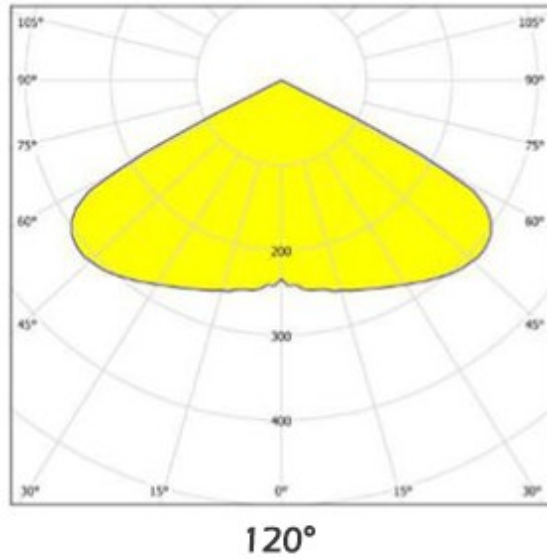
Model No.	DR-TP020-EG2XPX	DR-TP040-CG4XPX	DR-TP050-CG4XPX	DR-TP060-CG5XPX	DR-TP080-CG5XPX
System Watts/W	20W	40W	50W	60W	80W
System Efficiency/LPW	130LPW / 160LPW Optionl				
Lumen Output/lm	2.600/3.200±5%	5.200/6.400±5%	6.500/8.000±5%	7.800/9.600±5%	10.400/12.800±5
Rated Input Voltage/V	AC200~240V 50/60Hz (AC100~277V, 50/60Hz Optional)				
LEDs Light Source	SMD2835				
SDCM	<6				
CCT/K	5000K for Standard (3000K/4000K/5700K/6500K Optional)				
CRI/Ra	>80Ra (>70Ra for Option)				
Power Factor	>0.91				
THD	<10%				
Beam Angle(Optional)	120°				
UGR	<22				
LED Driver	BOKE Fixed Power/ DIP Switch Power Adjustable Optional				
IP Rating	IP65				
IK Level	IK08				
Dimming(Optional)	1-10V, DALI,Zigbee				
Emergency(Optional)	5W@3 Hours or Customized				
Sensor (Optional)	Daylight sensor/Microwave Sensor				
Protection Class	Class I				
Finishing Color(Optional)	RAL9016 Matt White				
Material	AL+PC				
Lifespan/hrs	62.000 Hrs (Ta=30°C@L70)				
Operation Temp/°C	-40°C to + 50°C(-40°F to 122°F)				
Storage Temp/°C	-40°C to + 65°C(-40°F to 149°F)				
Installation	Suspension / Ceiling Mounting Optional				
Certificate	CE(EMC+LVD),RoHS,ENEC ,SAA,RCM Available				

Dimensions

Character/Length	2ft	4ft	5ft
A	605mm	1205mm	1505mm
B	630mm	1230mm	1530mm
C	84mm	84mm	84mm
D	69mm	69mm	69mm



Photometry Diagram



Installation

Ceiling Mounted

- 1 Switch Off
- 2 Push and tighten screws with screwdriver.
- 3 Open buckle and separate it on both sides.
- 4 Install PG connector on one of the side.
- 5 Connect the input cable to the corresponding position on the terminal.
- 6 Close the end cap and tighten PG connector.
- 7 Install the luminaire with clips.
- 8 Turn on Switch

Suspension

- 1 Push
- 2 Tighten the screw with screwdriver
- 3 Connect stainless cable to the screws and clips
- 4 Install the lamp

INSTALLATION GUIDE

IMPORTANT SAFETY INFORMATION:

Please read all the instructions below before installation

- > Make sure that the supply voltage corresponds to the rated product voltage;
- > The product must be installed by a qualified electrician in accordance with the National Electrical Code and corresponding local codes.
- > If the product is damaged, do not use it!



Turn Off Power Supply

Wiring Diagram

L	brown	black
N	blue	white
⊕ GND	yellow/green	green

Dimmable				
DIM+	blue	brown	purple	white
DIM-	white	blue	gray	black

RISK OF PERSONAL INJURY – READ and follow all WARNINGS and installation instructions.

Keep or give to the owner for future reference.

Risk of cuts: Wear gloves to prevent cuts or abrasions when removing from carton, handling, installing, and maintaining this product.

Risk of electric shock: This product must be installed in accordance with the applicable installation code by a person familiar with the construction and operation of the product and the hazards involved.

Risk of Fire: Minimum 194°F supply conductors. Consult a qualified electrician to ensure correct branch circuit conductor.

DUALWAYS® assumes no responsibility for claims arising out of improper or careless Installation or handling of this product.

Packaging Information

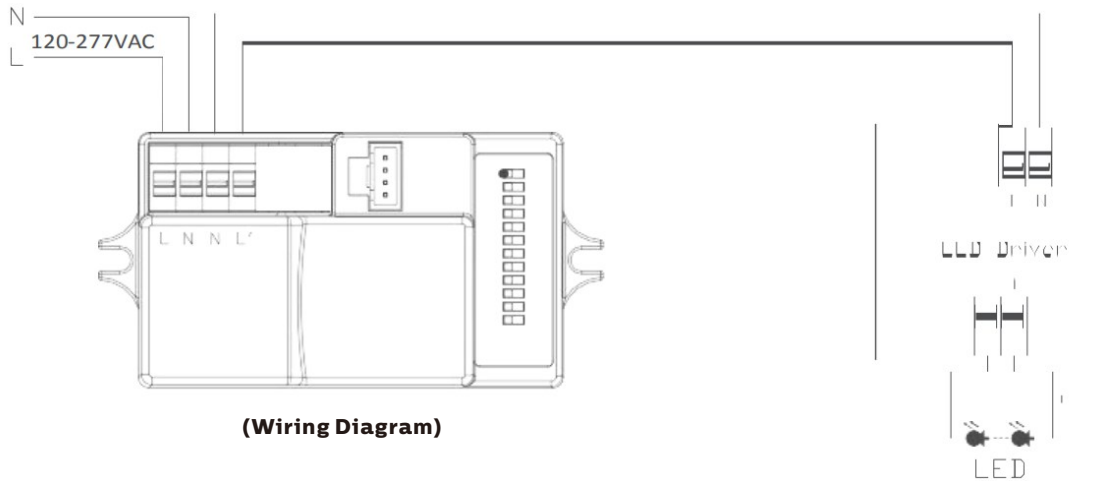
Model No.	Net Weight/Kg	Outer Carton Size/mm	Gross Weight/Kg	QTY"/CTN
DR-TP020-EG2XP	16.2	655*200*270	16.9	9PCS
DR-TP040-EG4XP	34.5	1255*200*230	35.8	9PCS
DR-TP050-EG4XP	35.4	1255*200*230	36.9	9PCS
DR-TP060-EG5XP	26.5	1555*200*230	27.8	6PCS
DR-TP080-EG5XP	26.2	1555*200*230	28.6	6PCS

Emergency Introduction

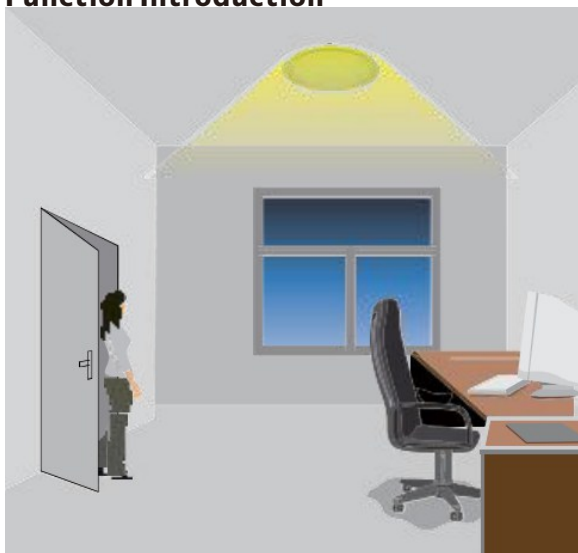
Model No.	Emergency	Emergency Power/W	Battery Parameter
DR-TP020-CG2XX	3	5	12V/800mAhNi-co Lithium
DR-TP040/050-CG4XX	3	5	12V/800mAhNi-co Lithium
DR-TP060/080-BG5XX	3	5	12V/800mAhNi-co Lithium

Microwave Sensor Introduction

On/Off Version



Function Introduction



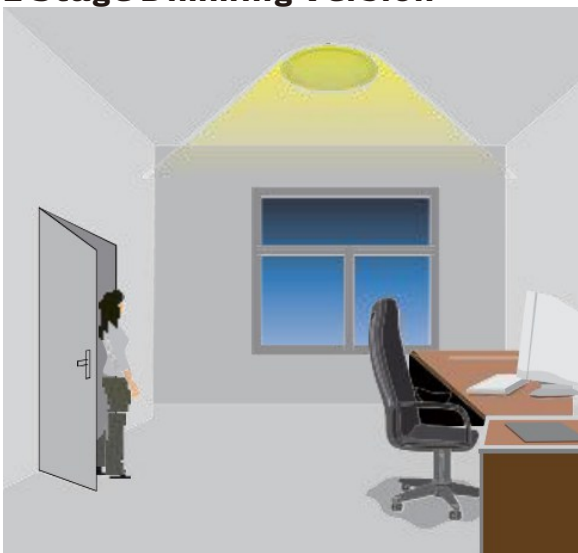
Light will turn on if any subject movement be detected within detection ranges.

- a. Standard hold time is 60s.
- b. Max detection range is 12x6m(ϕ xh)



Light will switch off after the hold time when no object movement within the detection ranges.

2 Stage Dimming Version



Light will turn on if any subject movement be detected within detection ranges.

- a. Standard hold time is 60s.
- b. Max detection range is 12x6m(ϕ xh).



Light will dimming to 10%/20%/30%/50%(optional via set key) after the hold time when no object movement within detection ranges.

Details Demo

Buckle Design
End-cap, quick & convenient to open and relock for wiring, greatly improve efficiency and save labor cost>>>



1/2 Al Housing +
1/2 PC
Cover,Excellent
Thermal
Conductivity>>>



High Capacity
LiFePO4
Battery,5W@3
Hrs Emergency
Time, 1,000
Cycles
Charging/Dis-
charging
Time>>>



Input Power
Cable from the
Back Optional>>>



Linkable
Through Double
End Wiring>>>



Linkable
Through Single
End Wiring>>>



Application Reference

